

Overview

Older AV Revolution firmware (prior to 2.14) did not provide a method to switch stereo sources in a mutually exclusive manner from the ICON-CP network. Many users requested this functionality which is now provided in firmware version 2.14 and application GUI 2.16.

The new exclusive switching feature has been implemented to use the existing mute functions provided with Stereo Inputs on the main GUI page. Manipulation of “BGM Select” input mutes ensures that only a single BGM input is active (un-muted) at any given time regardless of the control method:

Once a number of Stereo Inputs are configured for “BGM Select Group”, the exclusive muting function is provided regardless of the control method:

- GUI front page (Mute buttons)
- Control Panel network (BGM Select function)
- 3rd party control (Mute and Un-mute commands)

Stereo Input Configuration

Each of the Stereo Input blocks located in the “Advanced” page now includes a new button “BGM Select Group”. When this button is activated for an input, the input is configured for mutually exclusive switching with other inputs configured similarly.

Leaving the “BGM Select Group” button unselected allows that input to be mixed with other inputs, as was the case with previous firmware versions.



BGM Select Group - Off



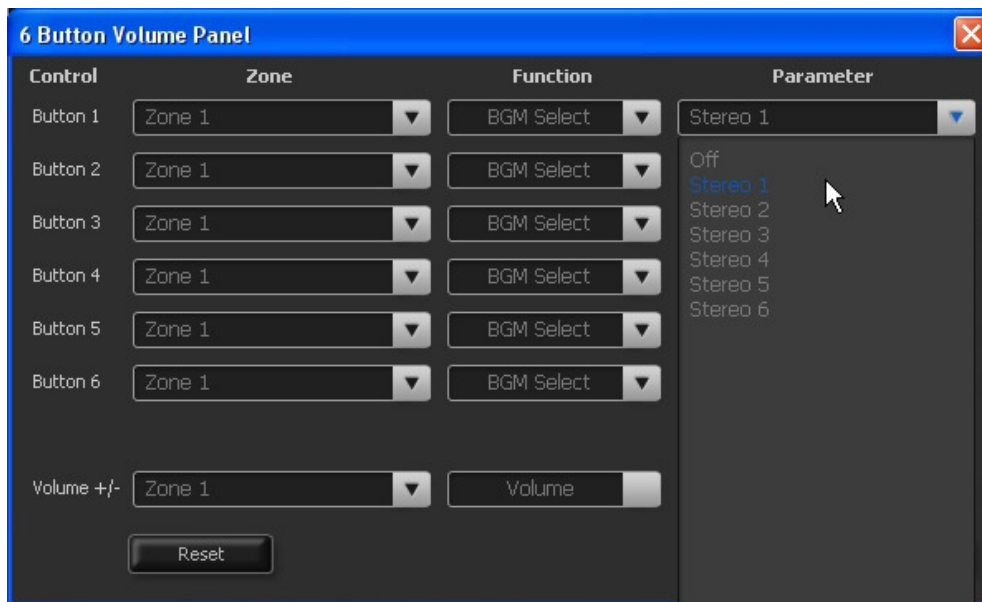
BGM Select Group - On

Control Panel Configuration

The new BGM Select function is supported by the following control panel modes:

- 6 buttons + Volume Panel
- 8 buttons Panel

Configuring a panel for BGM Select is performed on a per Zone basis, by selecting the required Zone and the BGM Select Function. Stereo inputs with the “BGM Select Group” button activated are provided in the Parameter drop-down selector as shown below.



New ICON-CP BGM Select Options

Note: Stereo Inputs that are not enabled as members of the “BGM Select” group will not appear in the parameter list.

GUI Example

In the following examples, Stereo Inputs 1 to 6 are members of the “BGM Select Group”.

Input 1 is currently active (un-muted).



The GUI operator selects the stereo input 2 mute button, stereo input 1 is muted and stereo input 2 is un-muted.

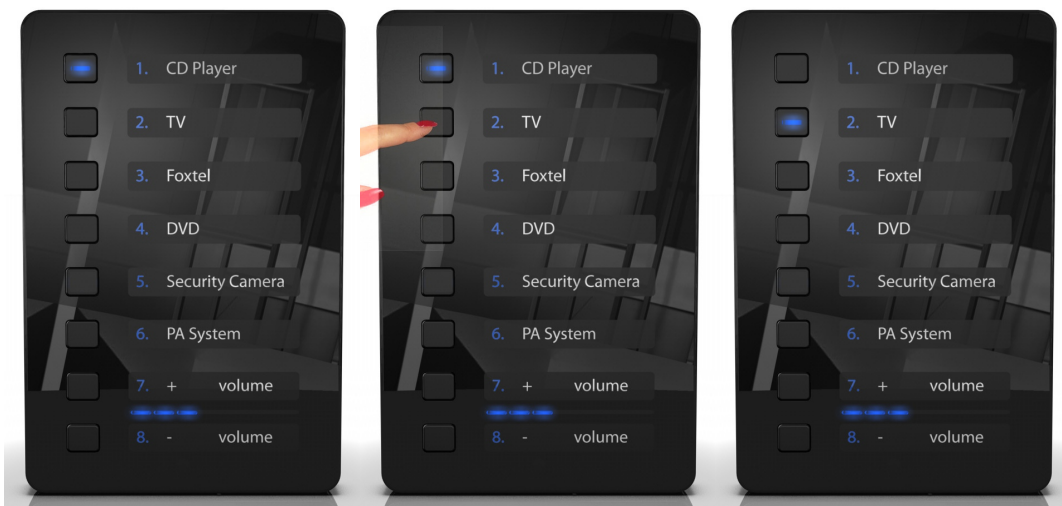


ICON-CP Examples

In the following examples, Stereo Inputs 1 to 4 are members of the “BGM Select Group” and are assigned to a panel as CD Player, TV, Foxtel and DVD.

Switching Sources

Input 1 (CD Player) is currently active. Selecting input 2 (TV) switches input 1 off and input 2 on.



Muting All Sources

Input 2 (TV) is currently active. Selecting input 2 (TV) again switches this input off (all inputs muted).

