

Australian Monitor

PM12 and PM16

Performance Mixing Consoles

The Australian Monitor PM Performance Mixers are a well-featured range of compact stereo console mixers, ideally suited to school, house of worship or hire applications. The PM12 offers four XLR mono input channels and four stereo input channels and the PM16 offers eight XLR mono channels and four stereo input channels. Each offer outstanding sonic performance with a host of features.

The PM Mixers include four or eight XLR mic/line channels with insert point, XLR/TRS input, three band EQ with mid sweep, channel mute and PFL functions. The four stereo channels feature dual 6.35mm jack inputs, three band EQ, channel mute and PFL. The master section includes two Aux sends with stereo returns, separate control room and headphone level controls as well as main stereo bus out and an alternative stereo output. Rack mount kits are supplied standard with both.

The Australian Monitor PM Series Performance Mixing Consoles offer a well featured, compact mixer with ultra low noise sonic performance.



Mono Channels Feature:

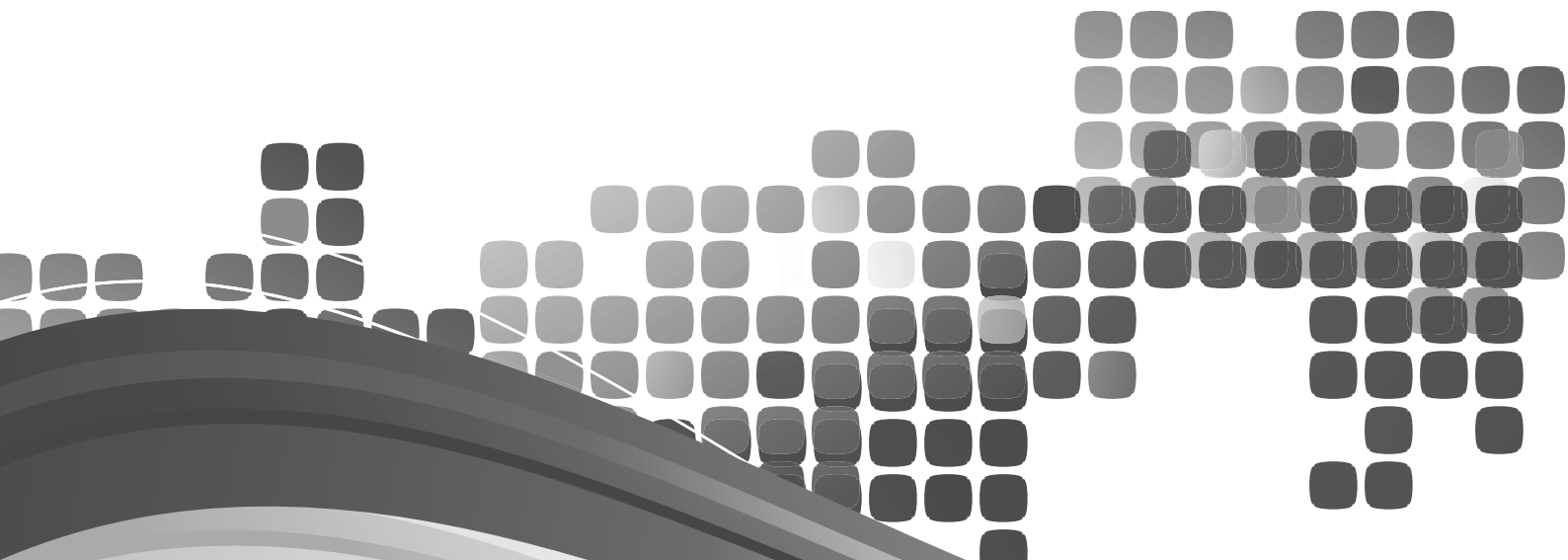
- Balanced XLR/6.35mm TRS input
- 6.35mm TRS insert point
- 48volt phantom power c/w LED indication
- Low cut filter
- Input gain trim
- 3 Band EQ with sweepable mids
- EQ bypass switch
- Pre and post fader Aux sends
- Stereo pan control
- Channel mute
- 4 segment LED channel metering
- Channel PFL c/w LED indication

Stereo Channels Feature:

- Dual 6.35mm jack inputs
- Input gain trim
- 3 band EQ
- EQ bypass switch
- Stereo pan control
- Channel mute
- 4 segment LED channel metering
- Channel PFL c/w LED indication
- Pre and post fader Aux sends

Master Section Feature:

- Pre/post Aux send level control
- Stereo Aux returns switchable to stereo or alternate bus outputs
- Tape in/Record out
- Stereo Control room outputs c/w level control
- Headphone output c/w level control
- Stereo 6.35mm alternate jack outputs
- Alternate output fader
- Alternate output PFL c/w LED indication
- Balanced XLR/6.35mm jack stereo bus outputs
- 2 x 10 segment L/R output LED indication
- L/R output faders



Specifications

Mono Inputs

Mic Input		Electronically balanced, discrete input configuration
PM12		4 BAL Mic INS
PM16		8 BAL Mic INS
Distortion (THD & N)		0.1% at +4 dBu, 1 kHz, Bandwidth 80 kHz
Mic E.I.N (22 Hz - 22 kHz)		-129.5 dBu, 150 Ohm source -117.3 dBq, 150 Ohm source -132.0 dBu, input shorted -122.0 dBq, input shorted
TRIM range	MIC	41dB Variable (-50dB, -9dB)
	LINE	41dB Variable (-30dB, +11dB)
Line Input		Electronically balanced
Bandwidth		10 Hz to 60 kHz \pm 3 dB
Line level range		+11 dBu to -30 dBu
Equalization	Hi Shelving	12 kHz \pm -15 dB
	Mid bell	250Hz -6KHz \pm -15dB, Q fixed at 1 oct
	Lo Shelving	80 Hz \pm -15 dB
	Lo Cut (High Pass) filter	-3dB at 75Hz, 18dB / oct

Stereo inputs

Line Input		Unbalanced
Bandwidth		10 Hz to 55 kHz \pm 3 dB
Distortion (THD & N)		0.01% at +4 dBu, 1 kHz, bandwidth 80 kHz

Master Mix section

Frequency Response		20Hz ~ 20kHz. \pm 1/-2dB
Max Output		+20 dBu balanced
Aux Send Max Out		+20 dBu unbalanced
Control Room Out		+20 dBu unbalanced
Signal-To-Noise Ratio		90 dBu, all channels at Unity Gain
Crosstalk (at 1 kHz)		-70 dB between input channels; -70dB between input/output channels

Power supply

Mains Voltages	USA/Canada	~ 115 V AC, 60 Hz
	U.K./Europe	~ 230 V AC, 50 Hz
	Australia/NZ	~ 230 V AC, 50 Hz
Size (W X H X D)	PM12	PM16
	335 x 88 x 435mm 13.2" x 3.5" x 17.2"	445 x 88 x 435mm 17.6" x 3.5" x 17.2"
Net Weight	8.5kg	11.0kg
	18.7lb	24.2lb
Shipping Dimensions (H x W x D)	525 x 175 x 385mm	525 x 175 x 385 mm
	20.7" x 6.9" x 15.2"	20.7" x 6.9" x 15.2"
Shipping Weight	10.5kg	13.0kg
	23.1lb	28.6lb



ENGINEERED BY AUSTRALIAN MONITOR

Address: 1 Clyde Street, Silverwater, Sydney NSW 2128 Australia. Private Bag 149, Silverwater NSW 1811 ABN 35 007 573 417

Website: www.australianmonitor.com.au International enquiries email: international@australianmonitor.com.au

DISTRIBUTED IN AUSTRALIA AND NEW ZEALAND BY HILLS SVL www.hillssvl.com.au

NSW P: 02 9647 1411 QLD P: 07 3852 1312 ACT P: 02 6260 4544 WA P: 08 9204 0200 VIC P: 03 9890 7477 SA P: 08 8408 8300 NZ P: 09 415 9426
E: nsw@hillssvl.com.au E: qld@hillssvl.com.au E: act@hillssvl.com.au E: wa@hillssvl.com.au E: vic@hillssvl.com.au E: sa@hillssvl.com.au E: sales@hillssvl.co.nz



Hills Sound, Vision & Lighting